



Newsletter

Fingal County Childcare Committee

April 2021

Volume 33, Number 33

In This Issue

- *FCCC Staff Contact Details*
- *Pip Announcements*
- *Covid- 19 impact support payment*
- *FAR update*
- *DCEDIY correspondence*
- *What works - funding*
- *AIM information online session*
- *2021 Linc programme*
- *Tusla EY Update*
- *HSE dedicated covid lines*
- *NCS Information*
- *Childminding updates*
- *First 5 updates*
- *Barnardos Online Training Webinars*
- *Child Protection COSAINT LEANAÍ - NATIONAL CHILD SAFEGUARDING PROGRAMME*
- *Information for parents*
- *FCCC Website*

FCCC staff are available via phone & email (Please see below).

- **Colette Redmond, Office Administrator**
Ph: 087- 7844805 or email colette@fingalcountychildcare.ie
- **Gina Daly, Programme Information Officer**
Ph: 087-1972084 or email gina@fingalcountychildcare.ie
- **Mairead Tucker, Lead Development Officer Swords and Surrounding Areas**
Ph: 087 7477553 Email: mairead@fingalcountychildcare.ie
- **Jacinta Cooke, Development Officer, Balbriggan and Surrounding Areas**
Ph: 087-7722228 or email jacinta@fingalcountychildcare.ie
- **Eimear Furlong, Development Officer, Balbriggan and Surrounding Areas**
Ph: 087-1884191 or email eimear@fingalcountychildcare.ie
- **Nicola McKernan, Development Officer, Dublin 15, and Surrounding Areas**
Ph: 087 6025263 or email nicola@fingalcountychildcare.ie
- **Sarah McKenna, Regional Childminding Development Officer (CMDO)**
Ph: 087-4485558 or email sarah@fingalcountychildcare.ie
- **Helen Campbell, Finance & Office Manager**
Ph: 087 9053890 or email helen@fingalcountychildcare.ie
- **Linda Sammon, Finance Officer**
Ph: 087-7882688 or email linda@fingalcountychildcare.ie
- **Adrienne Doyle, Operations Manager**
Ph: 087- 9217918 or email adrienne@fingalcountychildcare.ie

PIP Announcements

Notice of deactivation of two Pobal mailboxes and how to contact EYPC

Dear Service Provider,

The two Pobal mailboxes below will no longer be active as of the **7th of May 2021**. Emails sent to these mailboxes after this date will not be delivered.

- pipdocuments@pobal.ie
- highercap@pobal.ie

The quickest way to contact the EYPC is by submitting a Request on your Early Years Hive portal. Please see this how to guide or guidance on using Requests on the Hive.

<https://earlyyearshive.ncs.gov.ie/how-to-create-a-request.pdf>

You can also email EYPC@pobal.ie or call 01 511 7222.

Early Years Team

NCS Sponsors: Launch of Dedicated Phone Line/Email Address and Process Reminder

Dear Service Provider,

We are pleased to announce that a new mailbox and phone line have been launched by the NCS Parent Support Centre to support with the NCS sponsor process. These are operated by the NCS Sponsors Team, who are specially trained on the Sponsor process for NCS. The NCS Sponsors Team can be contacted Monday to Friday from 9am to 5pm by phone at 01 906 8535 or by email at sponsors@ncs.gov.ie

Please note that the NCS Sponsors Team can only support on Sponsor-related queries. Services looking for operational support (e.g., attendance Returns for Sponsor CHICKs) should still raise a request through the Early Years Hive or contact EYPC.

Sponsor process

Below is a reminder of the Sponsor process, you can also find more information on the [NCS FAQ](#) on the Early Years Hive:

1. Referrals are posted to NCS, P.O. Box 13105, South Side Delivery Office, Cork City, Co. Cork.
2. We receive the referral, and it is converted to a Sponsor Application on the system
3. The CHICK notification is emailed to the Sponsor contact (Local Authority/Homeless Agency, HSE, Tusla) or to the parent (in the case of DJE and DES referrals)
4. The Sponsor shares the CHICK with the parent.
5. The parent brings the CHICK to the Provider to set up the claim for the child.
6. The Provider registers the CHICK on the Early Years Hive (see below section on how to tell if a CHICK is a Sponsor CHICK)
7. A subsidy is paid by DCEDIY to the Provider based on hours claimed (the claim does not need to be approved by the parent)
8. Providers may not charge parents fees for Sponsor places.

An urgent placement may sometimes be requested for a Sponsored child and in such cases, the Sponsor should be asked to have the referral in the post to Pobal within 2 days. This will help avoid any potential funding gaps where a Provider is waiting for a CHICK. We remind Providers that a Sponsor CHICK can only be claimed from the start date on the CHICK; Registrations can be set up for the current week, or for the previous week where the start date allows, and the child was in attendance.

Sponsor subsidies and provider service fees

Sponsor Subsidies range from €4.31 - €5.87 per hour, these rates are higher than the mainstream NCS and are in place to cover the cost of childcare for Sponsor families. You should also be aware that parents cannot be charged fees where the child has a Sponsor CHICK, this is outlined in chapter 14 of the [NCS Policy Guidelines](#) and is a condition of your [Any Provider who charges fees to a parent for a Sponsor place would be in breach of their Funding Agreement](#).

To confirm whether a CHICK is a Sponsor CHICK, check the 'Claim Source' field on the Submit Claim page on HIVE. This is the page you will see after you have entered the CHICK and the child's name and date of birth on the NCS Registrations page. The source will read 'Sponsor' if it is a Sponsor CHICK.

The hourly rates are the same across all Sponsor bodies and can be viewed below:

< 12 months	€5.87
Pre-ECCE	€5
ECCE / ECCE-eligible / Early Start	€4.54
School-age	€4.31

CCC support

If you are having difficulties with accessing a referral assessment, please contact your local CCC. Early Years Team.

Covid-19 Impact Support Payment

This scheme was launched on the 1st of March. The purpose of this funding is to assist services that make a loss/deficit in that month. This funding will be available throughout 2021 for eligible ELC and SAC services that require further financial assistance in addition to current support measures available and others that may be announced throughout the year. If you feel you may be eligible to apply, please contact the FCCC Development Officer for your area and they will guide you through the process.



FAR Certification

PHECC recently announced that staff who already have FAR certification which expires between March 2020 and 31 July 2021 may complete a 2-day refresher course to maintain FAR certification.

For further information, please click on the link below:

https://www.phecit.ie/PHECC/Publications_and_Resources/Newsletters/Newsletter_Items/2020/Update_on_PHECC_Responder_level_recertification_21_01_21_.aspx

DCEDIY - ELC & SAC Updates including the Resumption of Compliance Checks & Department of Education Inspections 3 April 2021

Dear Provider,

We are writing to you today regarding the resumption of compliance checks on the ECCE programme from 19 April. We also wish to advise you of the Department of Education's (DE) arrangements for the inspection of ELC settings for April–June 2021.

Resumption of DCEDIY Compliance Checks on the ECCE programme from 19 April

Further to the communication issued on 15 February 2021, when DCEDIY announced that compliance checks would resume on a staggered basis, Pobal will now commence compliance checks on the ECCE programme from 19 April.

The ECCE compliance checks will be carried out remotely (desk-based) and in full compliance with public health advice. The ECCE checks will also contain checks on AIM funding. Services who are selected for ECCE compliance checks will be required to submit relevant documents to Pobal, who will then review them. This may involve additional correspondence where clarifications are sought.

Resumption of compliance on other DCEDIY funded schemes, including NCS, is expected to follow in the coming weeks and advance notice will be given.

Correspondence in relation to previous compliance checks, notably CCSP compliance checks which commenced in late 2020, will resume to allow completion of current compliance checks. If your service is selected for compliance checks and you are experiencing difficulties in responding to Pobal's compliance requests, we would urge you to contact Pobal at cvisit@pobal.ie for assistance, as soon as possible. Pobal, when contacted, can discuss possible options to help ease the administrative burden associated with compliance checks.

<https://earlyyearshive.ncs.gov.ie/Compliance-Guide-for-Service-Providers-for-ECCE-2020-2021.pdf>

**Department of Education Arrangements for the
Inspection of ELC settings for April–June 2021**

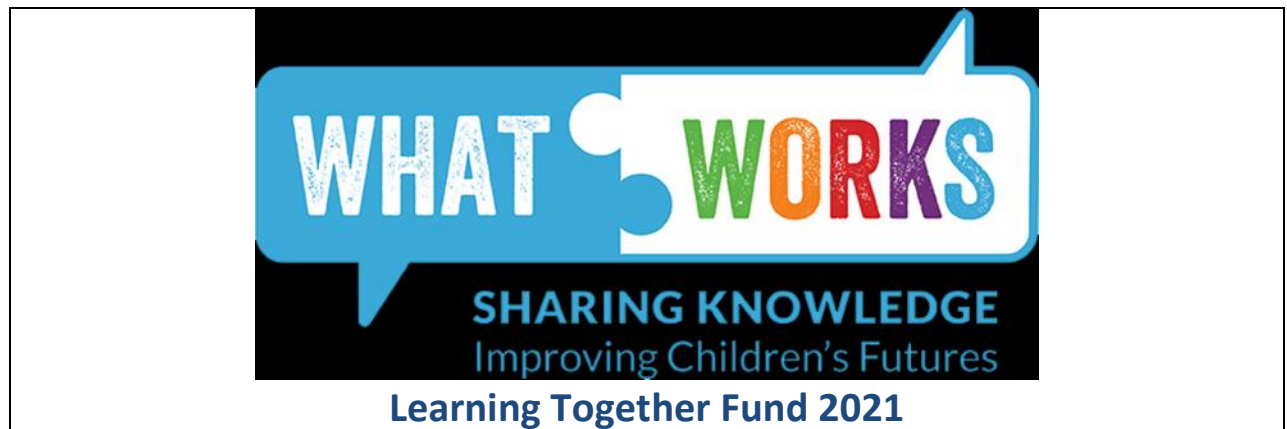
The DE Inspectorate has released a circular which provides information regarding the inspection, research, and evaluation engagement with ELC settings until June 2021. It also provides an update to the DE's previous circular issued to the ELC sector in June 2020.

Further, the circular details plan for the extension of DE education-focused inspections to 0–3-year-olds. The Inspectorate at DE is currently working on the development of the 0-6 education-focused inspection model in line with the commitment in First 5 and this development work will continue in a sample of ELC settings in the period from 12 April 2021.

DCEDIY looks forward to your cooperation with the above.

Kind regards

Early Years Communications Team



The 2021 Learning Together Fund is designed to support community and voluntary organisations to promote increased understanding and use of evidence-informed approaches to prevention and early intervention services for children and their families.

The activities funded should focus on organising or accessing relevant learning, training sessions and workforce development opportunities. All applications must have a focus on prevention and early intervention. Grant allocations will be minimum €1,500 and maximum €20,000 per year per applicant. This means that an organisation may apply multiple times up to a maximum of €20,000. The closing date for applications is 10 May 2021.

For more information and to read how to apply, please click on the link below:

<https://whatworks.gov.ie/resources/funding/learning-together-fund-2021/>



Better Start Access and Inclusion Model (AIM) online information session for providers

Fingal County Childcare Committee has always focused on ensuring that early year's providers in Fingal are kept informed of matters that influence high quality provision and practice for the sector.

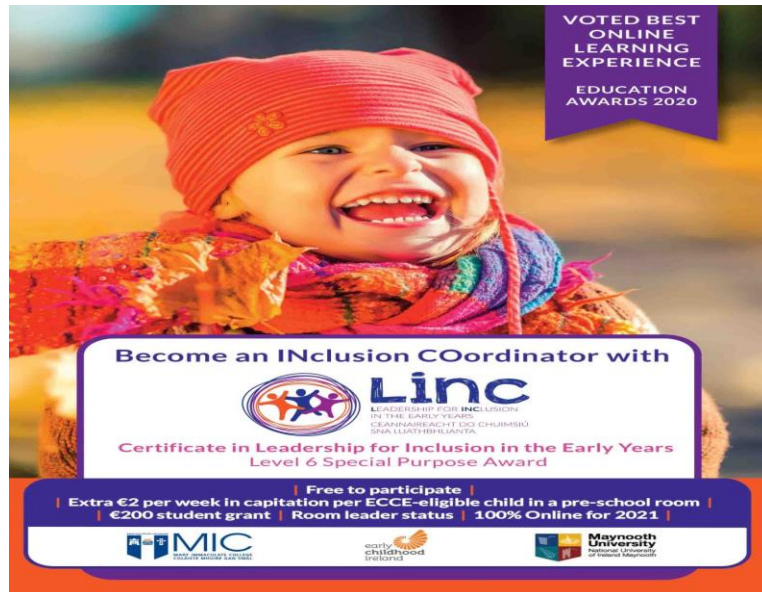
The Better Start Access and Inclusion Model (AIM) which was unveiled in June 2016 is a model of supports designed to ensure that children with disabilities can access the Early Childhood Care and Education (ECCE) programme. Its goal is to empower service providers to deliver an inclusive pre-school experience, ensuring that every child can fully participate in the ECCE programme and reap the benefits of quality early years care and education.

FCCC will be hosting 3 online sessions throughout Fingal to ensure that early year's settings are confident when applying through this process. The online session will be specifically for services who:

- Are newly opened.
- Will be engaging with AIM for the first time.
- Have had a change of staff.
- Wish to obtain a recap of AIM.

DATE	TIME	VENUE CHANGE
18 th May 2021	7.00-9.00pm	Balbriggan and surrounding areas with your development officers for this area Jacinta Cooke & Eimear Furlong
19 th May 2021	3.00-5.00pm	Dublin 15 and surrounding areas with your development officer Nicola McKernan
20 th May 2021	5.00-7.00pm	Swords and surrounding areas with your development officer Mairéad Tucker

There are only **20** places per online session, places are limited to 1 per service and are allocated on a first come first served basis. To secure a place please email Gina at info@fingalcountychildcare.ie for a booking form. Please note that FCCC are encouraging services to attend training with the development officers in their geographical area.



**The LINC Programme 2021/2022 is now open for applications.
Applications will close Friday 14 May.**

Who can apply?

- Any early learning and care setting with a pre-school room that is contracted for any DCEDIY Early Years Programme can nominate someone for LINC. The setting manager can nominate themselves or any member of the setting's staff. To be eligible for the programme, **candidates, at a minimum, must hold a level 5 major award in childcare.**
- All other settings. Settings that already have a LINC student or graduate working in their setting can nominate another staff member to participate in LINC (**only one applicant allowed per setting**).

First priority for places will be given to settings with no Inclusion Coordinator, including settings whose INCO may have left. Next priority will be given to settings that have an INCO but also have over 22 ECCE eligible children attending. Depending on the number of applications from this cohort, if there are still places available, they will be allocated to applicants from all other settings ie. settings that have an INCO and less than 22 ECCE children attending.

Applicant online information sessions with an overview of the 2021-22 programme will be held over the coming weeks, hosted by tutors who teach the programme. Details can be found on LINC's Eventbrite page on the button below.

Applicant online information sessions with an overview of the 2021-22 programme will be held over the coming weeks, hosted by tutors who teach the programme. Details can be found on LINC's Eventbrite page on the button below.

Please click on the links below for more information and to apply:

<https://lincprogramme.ie/>

<https://lincprogramme.ie/wp-content/uploads/2021/04/LINC-POSTER-FLYER-2021-web.pdf>

https://www.eventbrite.ie/o/linc-programme-consortium-20145092399?fbclid=IwAR2OV4xQrGhYSxDbn_q0nwg-2v_bD9Vl4QoJV6rricGC7uJ3DxumkeDGTjI

Tusla – Updates

Tusla are pleased to advise that our three spring webinars delivered in March are now all available [to view in full on our website](#) along with a range of supporting materials.

Below are the links to the webinars:

- [School Age Registration, Re-registration and CSSCU](#)
- [Inspections and Findings - COVID 19](#)
- [Parent engagement process and activity reports](#)

Early Years Re-Registration


Registration of ELC-only Services: The final deadline for services with open applications is **1 November 2021**.



Covid-19 Support Helplines


There are two helplines available to services who have a suspected or confirmed case of Covid-19.

1. HSE Childcare Facilities Helpline
Telephone: 01 511 9777
Open: 8:30am – 4:30pm Monday to Friday
10am – 4.30pm Saturdays, Sundays, and Bank Holidays
2. The National Covid-19 Out of Hours Support Helpline:
Telephone: 1800 940 341
Open: 10:00am – 1:00pm and 1:30pm - 4:00pm
Saturdays, Sundays, and Bank Holidays

 An Roinn Leanaí, Comhionannais,
Míchumais, Láimhúirtíochta agus Óige
Department of Children, Equality,
Disability, Integration and Youth

**National Covid-19 Support
Helpline for ELC and SAC providers**

If you are a childcare provider and/or a childminder and need out of hours support in relation to a suspected or confirmed case of Covid-19 in your childcare service please contact
1800 940341
This support line is available only
**Saturdays/Sundays and Bank holidays
from 10am - 1pm and 1.30pm - 4pm**

 Coronavirus
COVID-19
Public Health
Advice



Renewing a chick

A chick is valid for 12 months.

Parents

- At least 20 working days before the expiry of the award/chick, the parent is sent a notification telling them to log onto the parent portal on the hive.
- To minimize the risk of a break in subsidy, parents are advised that they should log into their account and go to my claims on the Parent Portal as soon as possible to confirm they would like to renew the subsidy.
- It is the parents' responsibility to make a note of when their award ends and when they receive their notifications, as above go onto their portal to renew their chick, and give to the service provider where their child/children attend.

Service Providers

- A service provider will get notification that CHICKS are expiring. 20 days prior on their Hive portal, under notifications, it does not use the child's name but unique number, so service needs to check who that is. You can open your notifications by clicking on the number beside the bell.
- It is mandatory for a service provider to have a written contract or agreement in place with every parent under the National Childcare Scheme. Once the CHICK has been presented and childcare hours have been agreed, this contract must be physically signed and dated on the same day by both the service provider and the parent, and both should retain a copy. Within this agreement the provider should refer the parent to the date when the chick expires. It might be worthwhile to explain to them at this time to make a note of this date, explaining to them that it is their responsibility to renew this chick and bring it to the service to avoid any break in the deduction in their fees. You will find some guidance on agreements with parents which includes a sample temple of an agreement on your service provider portal → **programme information** → **NCS information** → **compliance**.

Fingal County Childcare Committee Child-Minding Information & Updates

Launch of The National Action Plan for Childminding (2021-2028)

“

I am delighted to be launching this important and long-awaited reform. Until now there has been very little State support for childminding or public recognition of the important role that childminders play. This National Action Plan, which stresses the distinctive features of childminding, will open up a range of supports to childminders and will bring many benefits to children, to their parents, and to childminders themselves.

— **RODERIC O'GORMAN, T.D.**

Minister for Children, Equality,
Disability, Integration and Youth



An Roinn Leanaí, Comhionannais,
Míchumais, Léimhártaisochta agus Oige
Department of Children, Equality,
Disability, Integration and Youth



National Action Plan
for Childminding
2021-2028

The National Action Plan for childminding (2021-2028) was officially launched on the 15th of April by The Minister for Children, Equality, Disability, Integration and Youth, Roderic O’Gorman.

The overall objective of this Action Plan is to improve access to high quality and affordable early learning and care and school-age childcare through childminding. To do this, the action plan sets out an incremental and supportive pathway to regulation. This will enable more childminders to access Government subsidies, making their services more affordable to parents. It will also enable them to access a variety of supports to assist them in meeting regulatory and quality requirements.

For more information on this, click on the link below.

Webpage link www.gov.ie/childminding

If you are a childminder, thinking of becoming a childminder or require any support or advice in relation to your childminding service you can contact the development team at Fingal CCC by calling our main office on (01) 4851727 or the development officer in your area:

- Mairéad Tucker, Lead Development Officer Swords and Surrounding Areas Ph: 087 7477553
Email: mairead@fingalcountychildcare.ie
- Jacinta Cooke, Development Officer, Balbriggan and Surrounding Areas Ph: 087-7722228
Email jacinta@fingalcountychildcare.ie
- Eimear Furlong, Development Officer, Balbriggan and Surrounding Areas Ph: 087-1884191
or Email eimear@fingalcountychildcare.ie
- Nicola McKernan, Development Officer, Dublin 15, and Surrounding Areas Ph: 087 6025263
Email: nicola@fingalcountychildcare.ie



Preschool at Home Hub

The First 5 Preschool at Home Hub provides a range of indoor and outdoor activities to support and encourage children's interests.

New resources are added regularly.

<https://first5.gov.ie/parents/pre-school-at-home>

DCEDIY are constantly reviewing and updating the First5 website to ensure that the most up to date information is available to the Early Years & School Age sector.

<https://first5.gov.ie/guidance>

First 5 Funding Model

Information regarding the First 5 Funding Model was recently published. You will find the details on the link below.

<https://first5fundingmodel.gov.ie/publications-2/>

Barnardos Resources Online Training Webinars

Webinar -[Making the Most of Supervision \(3 day event for Supervisors\)](#) - €454- 12th and 13th May, 22nd June – 10.00am to 5.00pm

Webinar -[An Introduction to Creative Mindfulness Practices in Early Years Settings](#) - €15-19th May 2021 – 5.00pm to 7.00pm



Cosaint leanaí - national child safeguarding programme – early learning and care



Developing a Child Safeguarding Statement

Early Learning and Care and School Age Childcare services are providers of relevant services under the Children First Act, 2015. This means that the owner of the service or the chairperson of the Board of Management has a legal obligation to ensure that the Child Safeguarding Statement is in place.

Laura Dagger, Coordinator of the National Child Safeguarding Programme recently recorded a podcast with Early Childhood Ireland on developing a Child Safeguarding Statement in ELC & SAC services.

listen to the podcast by clicking on the link below:

<https://www.youtube.com/watch?v=wt9BKZLln04>

As you are all aware there is an embargo on training for the foundation level Children's First. If services are concerned that their certificate is out of date or will be over the coming weeks, a memo has been sent to all Early Years Inspectors informing them that in this present moment the certificates from the E-Learning module will suffice. If it has been 3 years or more since an employee has completed the E-Learning, then they are advised to complete it again.

The new website <http://childsafeguardingelc.ie/early-learning-care-services/> is a fantastic resource that we should be directing providers to for information and links to documents etc.

The National Child Safeguarding Programme: Early Learning and Care launched their website in October, please see below.

The National Child Safeguarding Programme: Early Learning and Care provides the only Tusla approved sector specific Child Safeguarding Programme in Ireland. Full of Early Learning and Care sector specific child safeguarding training and resources, which were developed in conjunction with Tusla, www.childsafeguardingelc.ie is a 'one stop shop' for all Child Safeguarding resources for Early Learning and Care Services in Ireland.

The website can be found at www.childsafeguardingelc.ie and on Twitter at @safeguardingelc.

Children First Child Protection revision webinar

This webinar was developed to highlight the key elements of the face-to-face Always Children First Foundation training. Its purpose is to serve as an interim revision resource for Early Years practitioners.

https://www.youtube.com/watch?v=aH_7yLe1ZPI&feature=youtu.be

CHILDREN FIRST REFRESHER RESOURCES

In the absence of a full training strategy from the National Child Safeguarding Programme due to current public health guidelines, there are a full range of Refresher online resources available on www.childsafeguardingelc.ie

- Staff in all services who haven't completed the Tusla eLearning Programme in the last 3 years to do so <https://www.tusla.ie/children-first/children-first-e-learning-programme/>
- Staff in all services can access the Children First Revision Webinar <http://childsafeguardingelc.ie/early-learning-care-services/>
- Staff in all services can access the Garda Vetting webinar <http://childsafeguardingelc.ie/early-learning-care-services/>
- Staff in all services can review and refresh their knowledge by accessing Info Blasts on various topics <http://childsafeguardingelc.ie/category/english/>
- Staff within ELC and SAC services can refresh their knowledge of their own organisation's Child Safeguarding Policy using the resources available at <http://childsafeguardingelc.ie/resources-publications/> and on Tulsa's website <https://www.tusla.ie/services/child-protection-welfare/> ; https://www.tusla.ie/uploads/content/Tusla_-_Child_Safeguarding_-_A_Guide_for_Policy,_Procedure_and_Practice.pdf/

Early Learning and Care services are providers of Relevant Services under the Children First Act 2015.

Providers of Relevant Services under the Children First Act are required to have a Child Safeguarding Statement. *A key element of the Child Safeguarding Statement is the risk assessment.*

When completing a risk assessment, an Early Learning and Care service is required to examine all aspects of its service from a safeguarding perspective while children are availing of your service. The risk assessment should establish if there are any practices or features of your service that may potentially put a child at risk of harm.

Remember the risks identified should be in relation to the specific activities of the service with children. It is not in relation to general health and safety risks.

The Children First Act 2015 defines harm as:

Assault, ill-treatment, or neglect of the child in a manner that seriously affects or is likely to seriously affect the child's health, development, or welfare or

Sexual abuse of the child, whether caused by a single act, omission or circumstance or a series or combination of acts, omissions, or circumstances or otherwise.

The risk assessment process is intended to enable your organisation to:

- Identify potential risks.
- Develop policies and procedures to minimize risk by responding in a timely manner to potential risks.
- Review whether adequate precautions have been taken to eliminate or reduce these risks.

All risks that are identified and stated in the risk assessment **MUST** be accompanied by a list of policies and procedures that are in place to manage that risk. It is imperative that the risks outlined in your risk assessment are unique and individual to your service.

After the Child Safeguarding risk assessment has been completed, the areas of risk identified should be included in the body of Child Safeguarding Statement. The Child Safeguarding Statement should also outline the policies and procedures which are in place to manage the risks that have been identified.

The National Child Safeguarding Programme: Early Learning and Care have developed, in conjunction with Tusla, a Child Safeguarding Statement Template and Information Sheet which provides a detailed template and further information for completing a risk assessment within your Child Safeguarding Statement.

Further information can also be found at the following links:

<http://childsafeguardingelc.ie/resources-publications>

<https://www.tusla.ie/children-first/organisations/what-is-a-risk-assessment/>



Spring into Storytime is the libraries' annual celebration of families reading together. Libraries, Irish publishers, and Irish writers have teamed up for virtual library story times, bringing the magic of storytime into your home with online resources from your library and celebrating reading great Irish writing for young people.

For more information click on the link below:

<https://www.librariesireland.ie/services/right-to-read/spring-into-storytime/digital-storytimes>



FINGAL COUNTY CHILDCARE COMMITTEE – WEBSITE

FCCC website is updated daily with a broad range of information that is relevant to the early years and school age sectors in Fingal. Under LATEST NEWS you will find DCYA Updates, PIP Announcements, On-line Training, Information for parents and other topics that FCCC believes would be of interest to you, your staff, and your parents.

It is of particular importance is that providers regularly read and understand the most up to date FAQ's and PIP Announcements and if clarifications are required, please contact FCCC at (01) 4851727 or contact a staff member from the list on Page 1 above.

