

## How does Tusla respond to reports?



When a report is received by Tusla, the information will be assessed to see what support can be provided to families. Often, Tusla will want to speak with parents and children. An Garda Síochána may be involved as they also have child protection responsibilities.



Parents and guardians may also contact Tusla directly for support. The contact details are provided on the back of this leaflet. Tusla is committed to working in partnership with children, families, and communities.

## More information is available here:

[tusla.ie/children-first/parents-and-guardians/](https://tusla.ie/children-first/parents-and-guardians/)



[tusla.ie/children-first/mandated-persons/](https://tusla.ie/children-first/mandated-persons/)



An Irish language version is accessible using the link above.

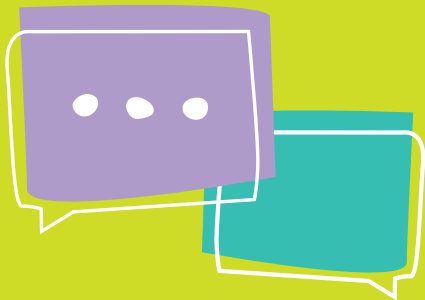
## Information for Parents and Guardians on Mandated Persons

All workers have a responsibility to keep children safe and they may need to report to Tusla if they are worried about a child.

**CFiAS**

Children First  
Information &  
Advice Service

**Children First** **TUSLA**  
An Ghníomhaireacht um  
Leanaí agus an Teaghlach  
Child and Family Agency



## Who are mandated persons?



Under the Children First Act 2015, certain people (many of whom are professionals) have additional legal responsibilities, and they are called mandated persons.

A full list of mandated persons is available in the Act. This includes teachers, childcare workers, doctors, nurses, social workers, social care workers, counsellors, An Garda Síochána, foster carers, psychologists and youth workers. Mandated persons often work with children but some work with adults.

You can ask if there are any mandated persons in the organisation your child attends.

## What do mandated persons do?



Mandated persons have a legal duty to report to Tusla if they are concerned that a child has been, is being, or may be harmed. This is called a mandated report. Harm means assault, ill-treatment, neglect or sexual abuse. However, not all reports to Tusla are mandated reports.



A mandated person will also need to make a mandated report if a child tells them they are being harmed.



It is good practice for a mandated person to tell you they are making a report to Tusla. However, there are situations where this will not happen.



All workers, including mandated persons, may use an online form to report concerns to Tusla.



Mandated persons may also report to Tusla where an adult reports childhood abuse. A mandated report will be made where a mandated person has reasonable grounds to suspect that a person, who is currently a child, has been, is being or is at risk of being harmed.



If a mandated person fails to make a mandated report, the Children First National Guidance outlines the possible consequences.



Mandated persons may also be asked to help Tusla in the assessment of a mandated report.

